

Pressure Filter

Pond filter and UVC

Instruction Manual

IMPORTANT: Please read this instruction manual carefully before using this product. Keep the manual safe for future reference.



Thank you for purchasing a PondHero Pressure Filter. The PondHero Pressure Filter combines mechanical and biological filtration with a powerful UV clarifier, to create clear, healthy pond water.

Being pressurised, the PondHero Pressure filter can be situated below the water level of raised ponds, for discrete placement, at the base of watercourses, or even a long distance away from the pond, hidden away from view. Cleaning the PondHero pressure filter is easy by way of turning it to waste and winding a handle. Media can be cleaned and dirty water flushed away without getting hands wet.

Attention

1. Keep out of reach of children
2. A drip loop should be installed in the power cable of the UV, to prevent water running downwards into an outdoor socket or outdoor switchbox.
3. An RCD (of which the rated working current is not over 30mA) must be installed when using the pump and UV, and the power sockets must be connected to an earth.
4. The PondHero Pressure Filter is intended for outdoor use only. Although shower proof it must never be placed in the pond.
5. The filter must never be used to filter any flammable liquids, or water over 35°C.
6. Always disconnect the power supply when handling, servicing or maintaining the UV.
7. Do not attempt to unplug or unwire the UV with wet hands.
8. Do not carry or retrieve the Pressure Filter by the electrical cable.
9. Power cable to UV cannot be replaced. If cut too short or in any way damaged, discard the unit. Do not attempt to access the electricals inside.

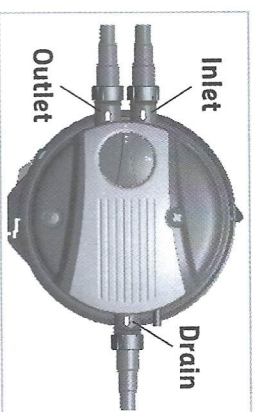
Features

- Mechanical and biological filtration combined
- Powerful UV clarifier to tackle green water
- Can be buried in the ground up to its lid.
- Water can be pumped through the filter then uphill
- Capable of high flow-through of water

Usage

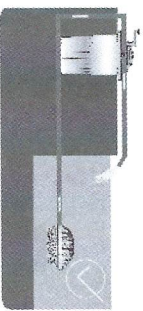
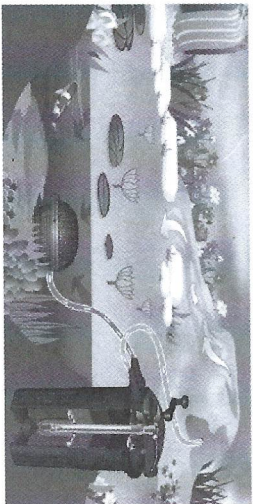
Only suitable for outside garden ponds. UV can be run continuously, 24 hours per day.

- If using 1 $\frac{1}{4}$ " or 1 $\frac{1}{2}$ " hose, cut off the smaller diameter step(s) on each of the three supplied hosietails.
- Make sure the clamp ring is secured while the filter is running.
- Always unplug UV before viewing or handling.
- Do not look at UV bulb when lit and plugged in.
- Spend 30 minutes checking for leaks after installing.

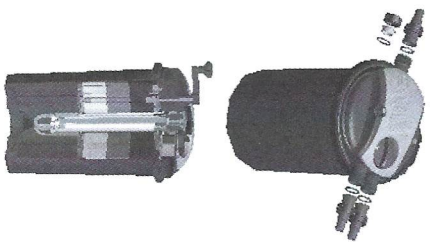




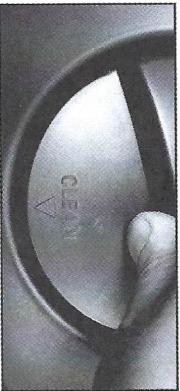
Filter set-up



CORRECT USAGE
The water outlet should be positioned above the water level



Filter maintenance



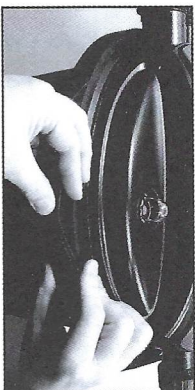
Step 1 - To clean the filter turn the valve from **RUN** to **CLEAN**. Water will stop returning to pond and instead leave by the drain on the rear of the filter lid.



Step 3 - Turn the filter valve back to **RUN**, and normal filtration and return to pond will resume.



Step 2 - Wind handle on filter to squeeze sponge inside and help remove dirt. Dirty water will then be pumped out of the drain to waste.

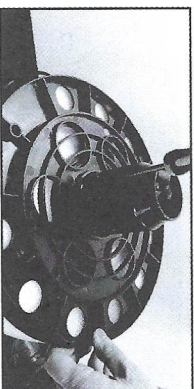


Step 4 - To access the sponges for inspection or replacement, slide clasp on clamp ring to the right, while at the same time **depressing** the left hand side of the clasp and pulling to the left. Use two hands.

Filter maintenance (continued)



Step 5 - Lift the lid and connected sponges out of the filter body and turn upside down



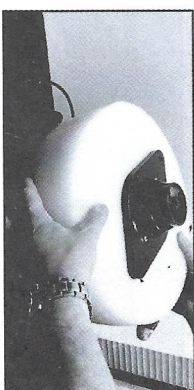
Step 7 - Using a screwdriver (not supplied) undo the screws in the bottom support plate.



Step 9 - To clean black Bio Balls in the base of the filter, remove by hand and wash in old pond water, then replace.



Step 6 - Remove the bottom shield



Step 8 - Sponges can then be lifted off and replaced.



Step 10 - Reverse steps 4 to 9 to ensure the clean Bio Balls and sponges are re-installed correctly and lid is closed.

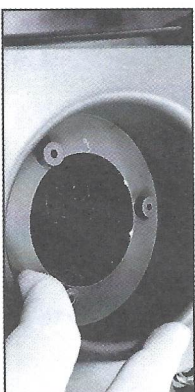




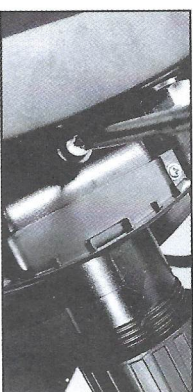
UVC maintenance



Step 1 - Pry off the valve with a screwdriver. **ENSURE POWER IS SWITCHED OFF.**



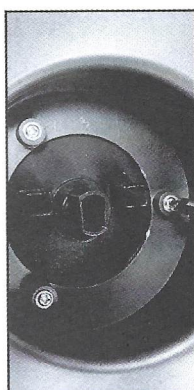
Step 3 - Lift off the blue filter casing.



Step 5 - Undo the large screw at the back of the UV compartment.



Step 7 - Unscrew locking nut to release the quartz sleeve.



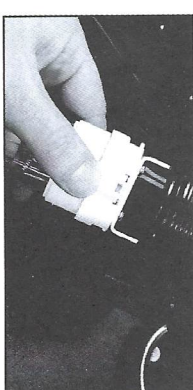
Step 2 - Unscrew the 3 screws.



Step 4 - Undo the screws on the lid of the UV compartment.



Step 6 - Lift out the whole UV assembly.



Step 8 - Unclip the bulb and replace. **CAUTION: NEVER LOOK AT A LIT UV BULB.**

Trouble shooting

1. If water is leaking around the hoses, check that the supplied rubber washers have been fitted. Check that the hose is the right size for the hose tail and that the hose clip has been properly tightened.
2. If water is leaking from the clamp, check that it is done up properly and tight, and that the O-ring is present inside the filter casing.
3. If the red ball is floating at the top of the clear indicator vessel on top of the filter, the filter needs cleaning - refer to filter maintenance on pg 4.
4. If the water turns green, check that the UV is plugged in and running 24 hours per day. If more than six months old the lamp will need replacing. Check that the quartz sleeve is clean and clear, to allow the UV light to penetrate the water. Check that the pump and filter have been properly matched for the pond size.
5. If filter sponges do not spring back after cleaning, replace old sponges for new.

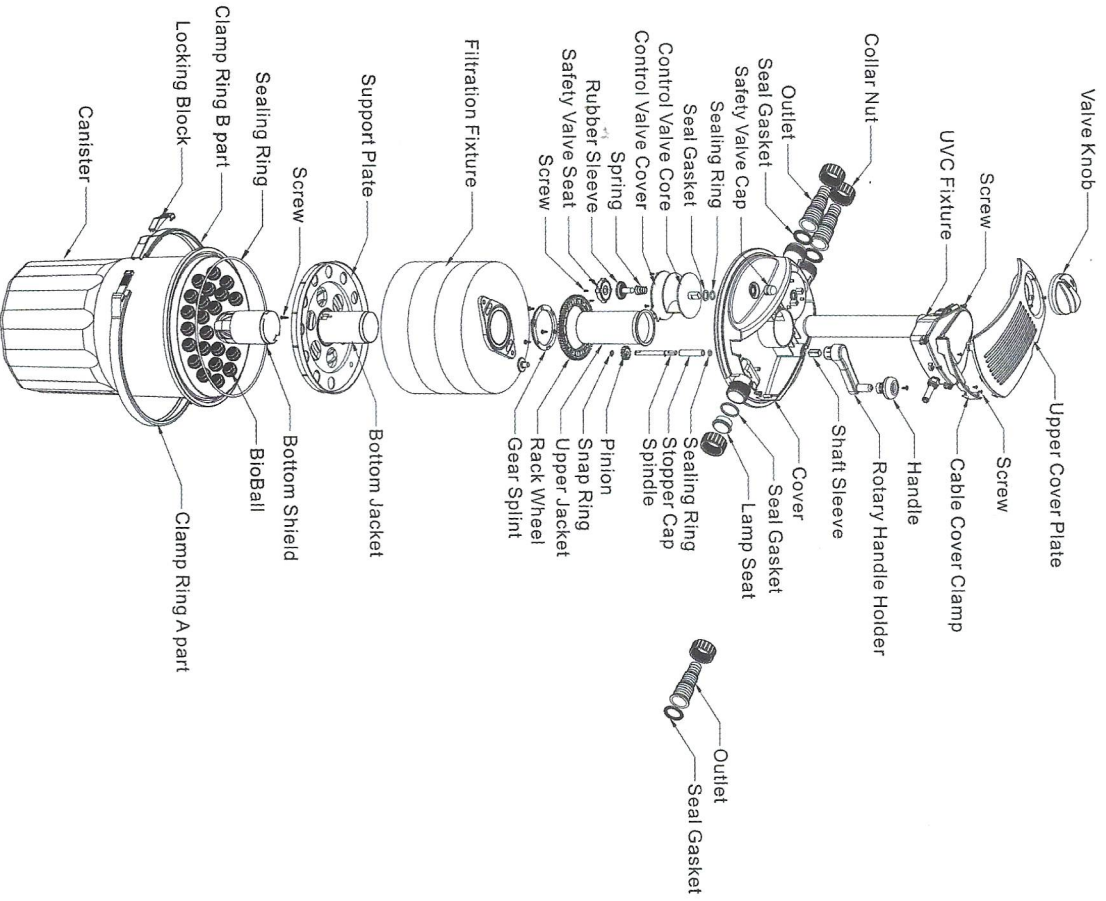
Specifications

MODEL	Maximum Pond Volume	Recommended Pump Flow Rate	UVC Power
15000	15,000 Ltrs	6000 - 10000 LPH	18W
20000	20,000 Ltrs	8000 - 12000 LPH	24W

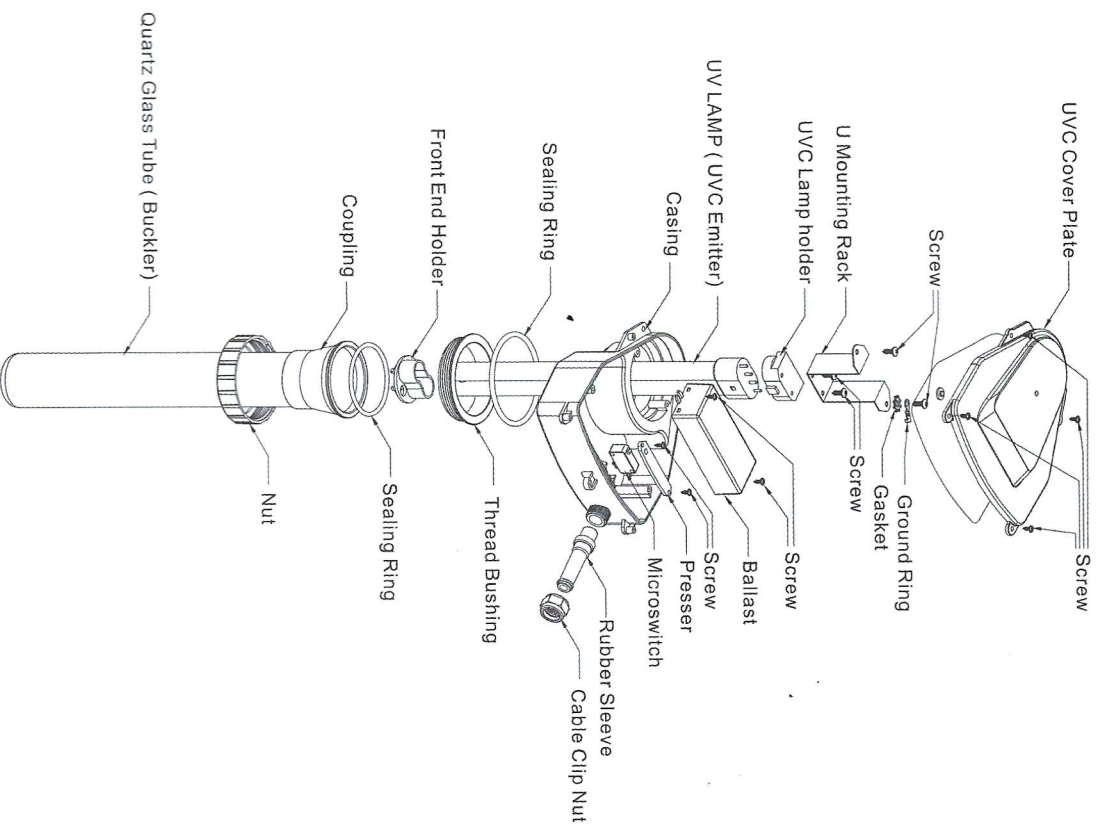




Exploded view - Pressure filter

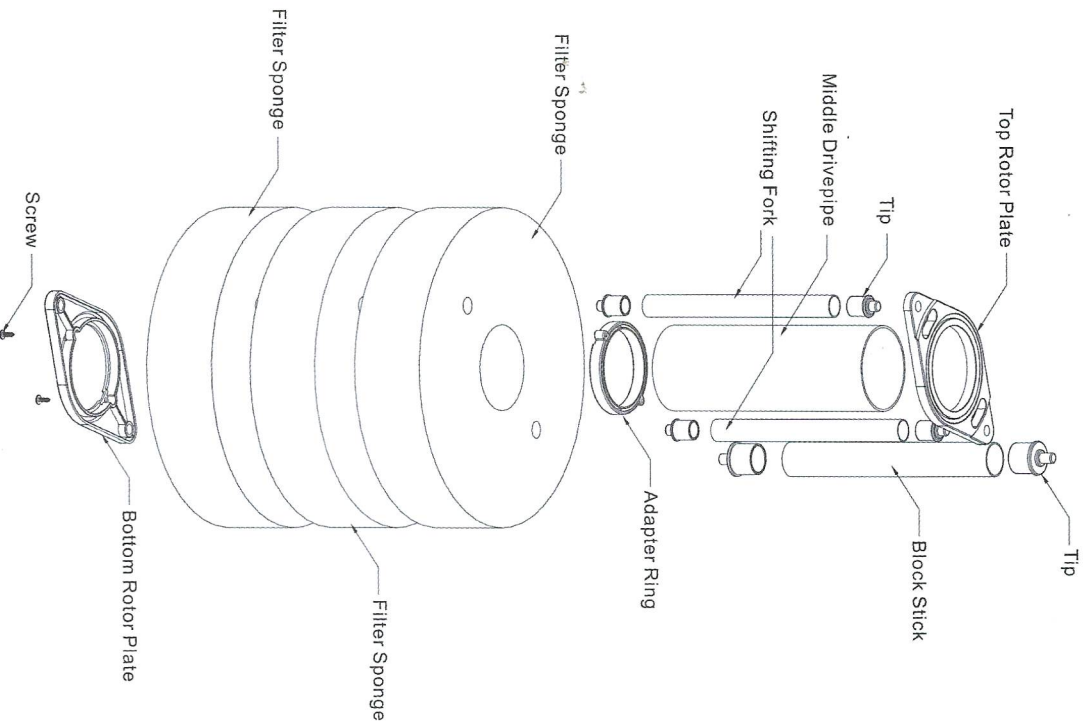


Exploded view - UVC





Exploded view - Sponge



Guarantee

This product is guaranteed against defects in material and workmanship for **2 years** from the date of purchase, under normal usage.

The guarantee **DOES NOT APPLY** in case of improper use, negligence, lack of maintenance or accidental damage to the pump. If the filter fails due to a manufacturing fault within this period it will be either repaired or replaced free of charge. Moving parts or wearable parts including the impeller and any washers or O rings, also quartz sleeves and UV bulbs are not covered by the guarantee and are available to order from your PondHero retailer.

Should your PondHero product stop working refer first to trouble shooting and if this does not help, return the product to the place of purchase.

Liability is limited to replacement of the faulty product only. No other costs will be reimbursed. This guarantee is not transferable and does not affect your statutory rights.

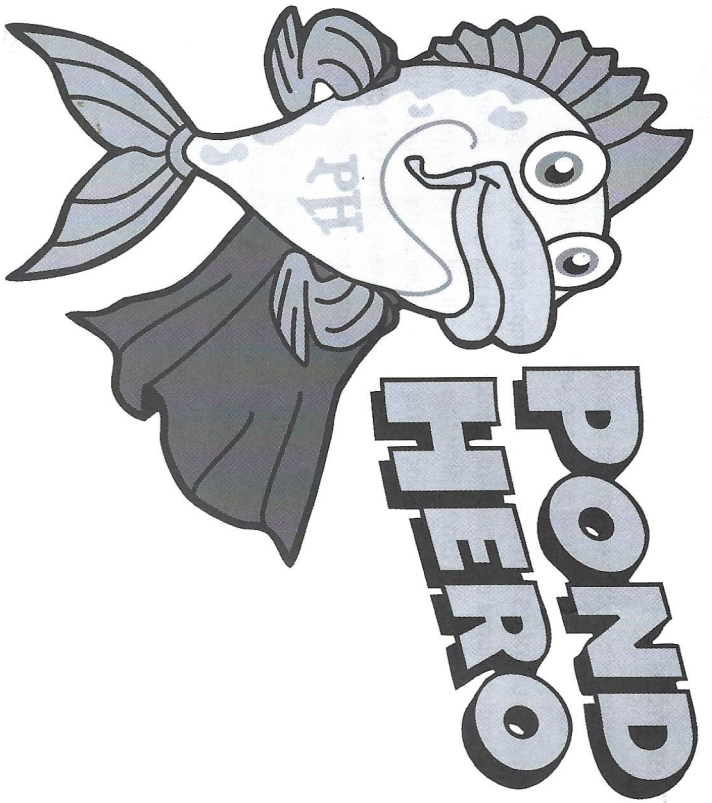
Do not attempt to tamper with or access electrical components inside the pump body. Doing so will invalidate the warranty.

The manufacturer or supplier shall not be responsible, or held liable for any damages caused by defective components or materials of this product, or for loss incurred by interruption of service, or any consequential/incidental damages and expenses arising from the production, sale use or misuse of this product or any other consequential loss.

Any warranty claim must be accompanied by a valid, dated proof of purchase. PondHero, ArmstrongDirect, its distributors and dealers shall not be held liable for any loss of fish, plants or any other livestock as a result of any failure or defect of this product.

The installation and use of your product outside of our recommendations as printed in this manual may also void the warranty.





PondHero

is a brand of Armstrong Direct Limited
A3 Bentley Avenue, Billingham, TS23 4BU
01642 370888